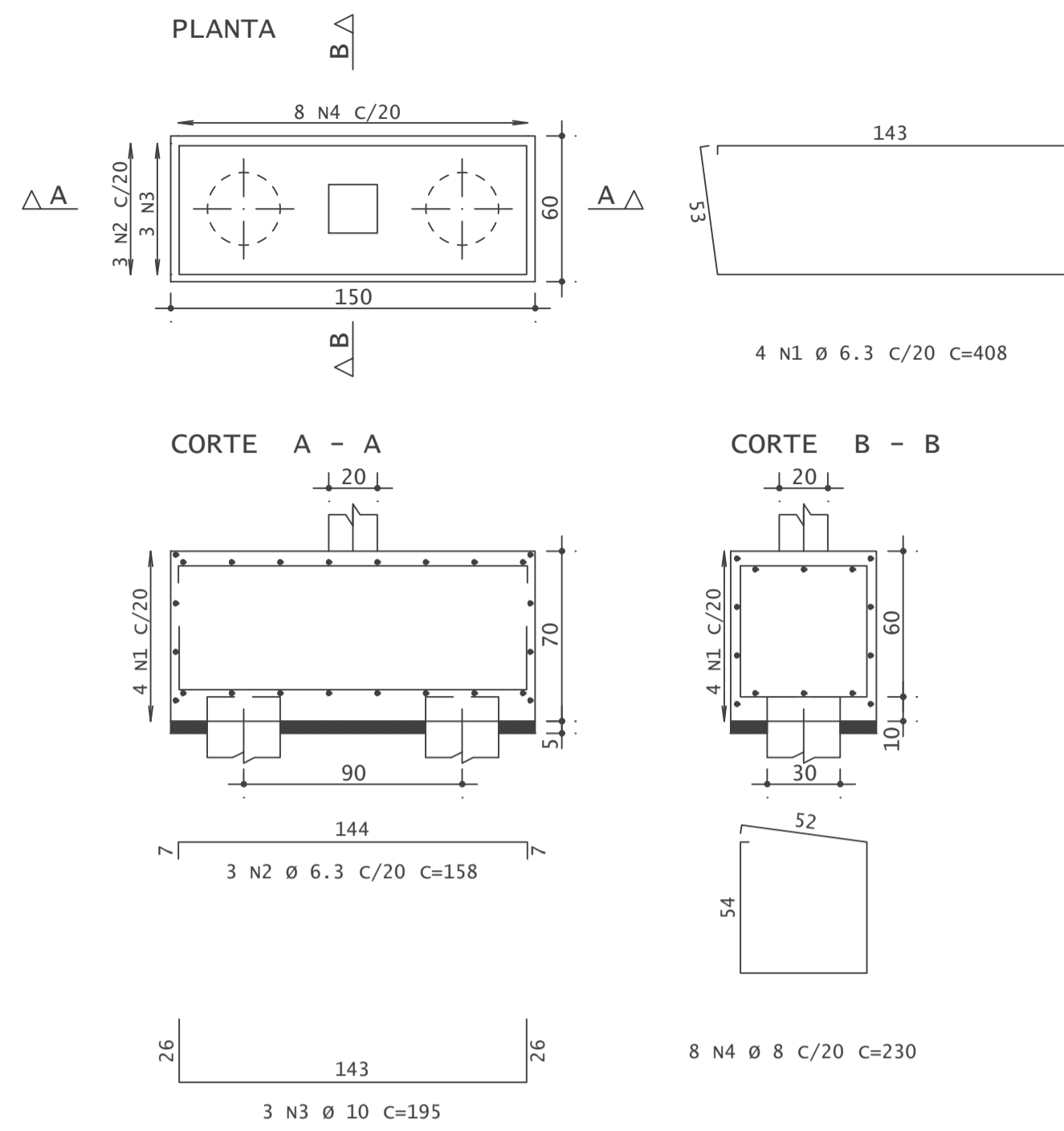
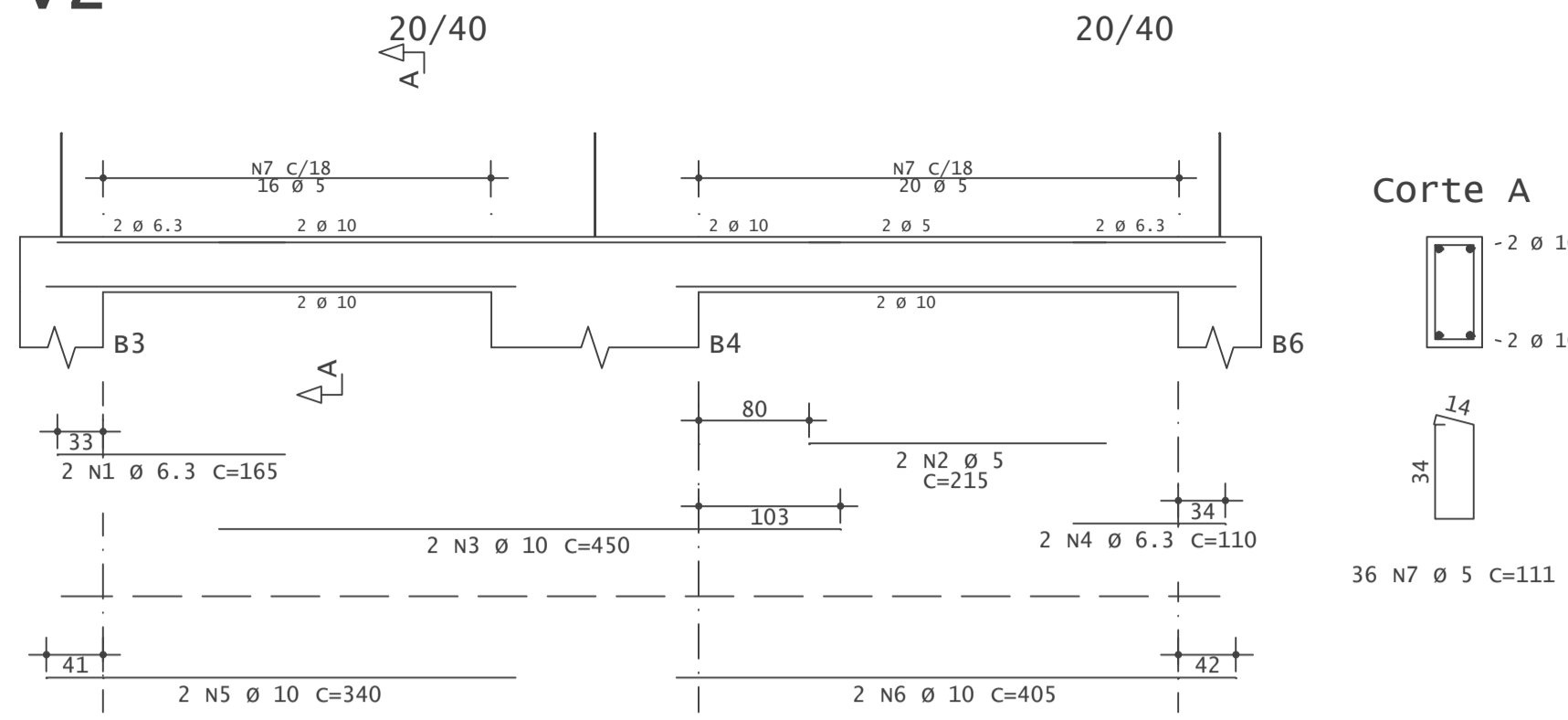


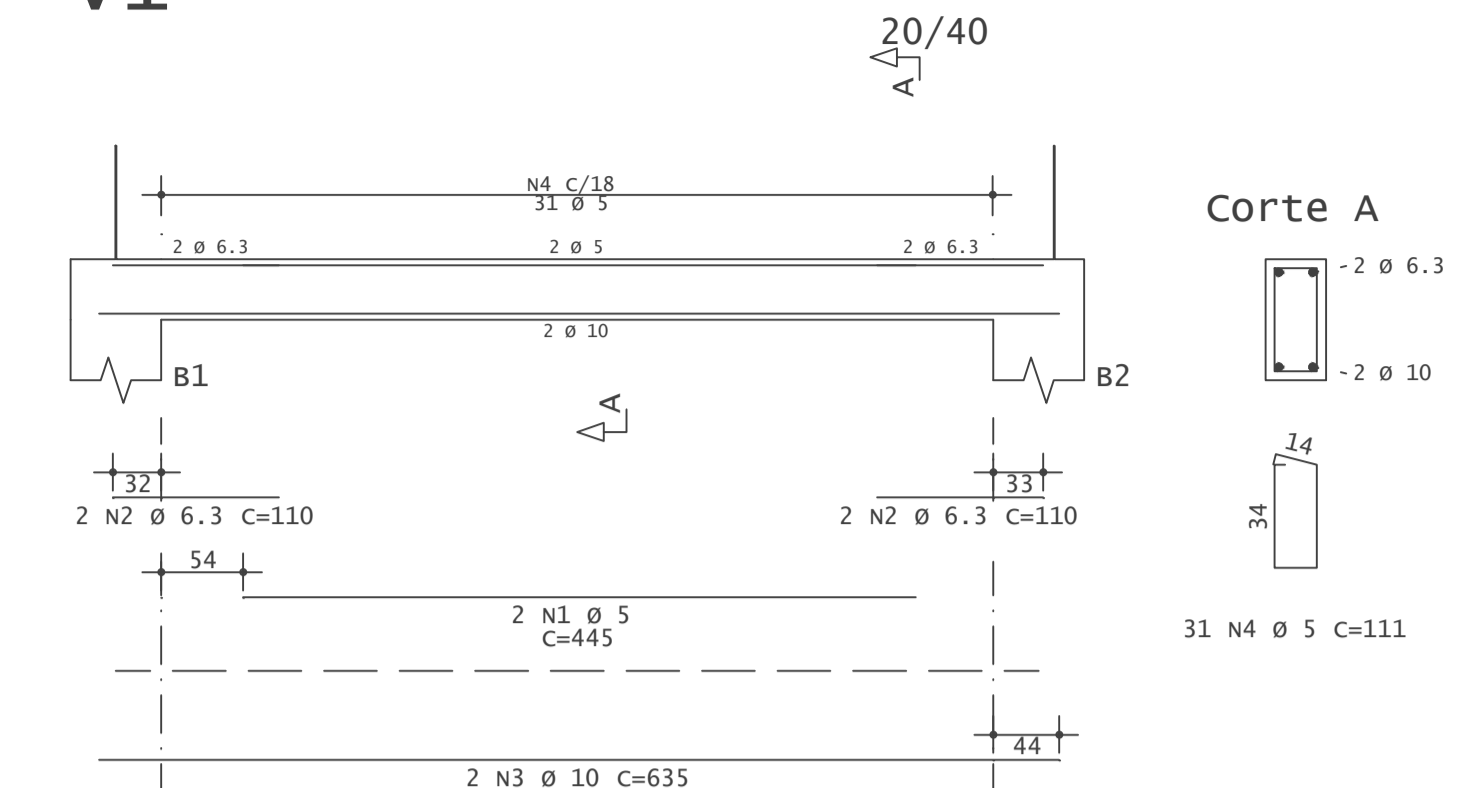
B1=B2=B3=B4=B5=B6
(ESCALA 1:25)



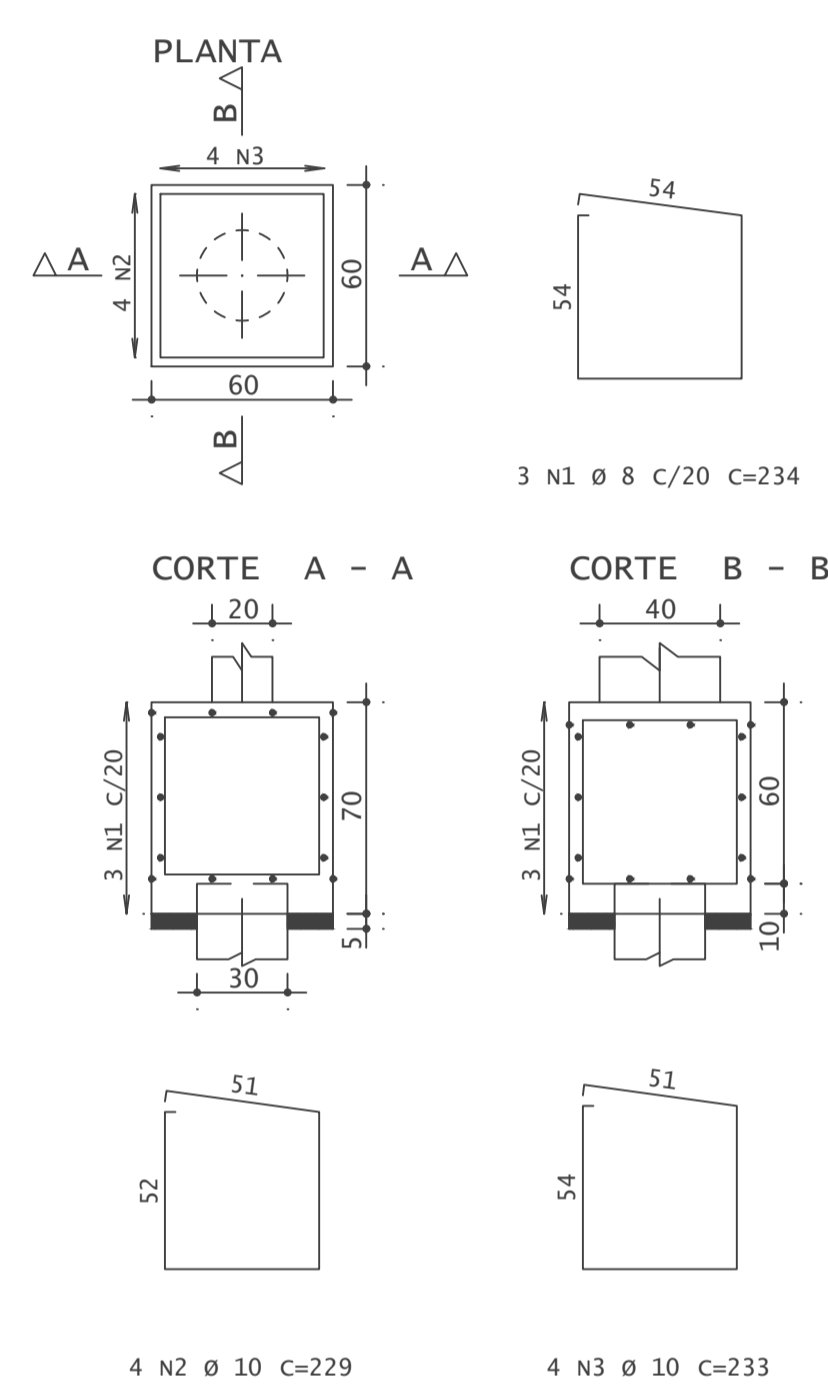
V2



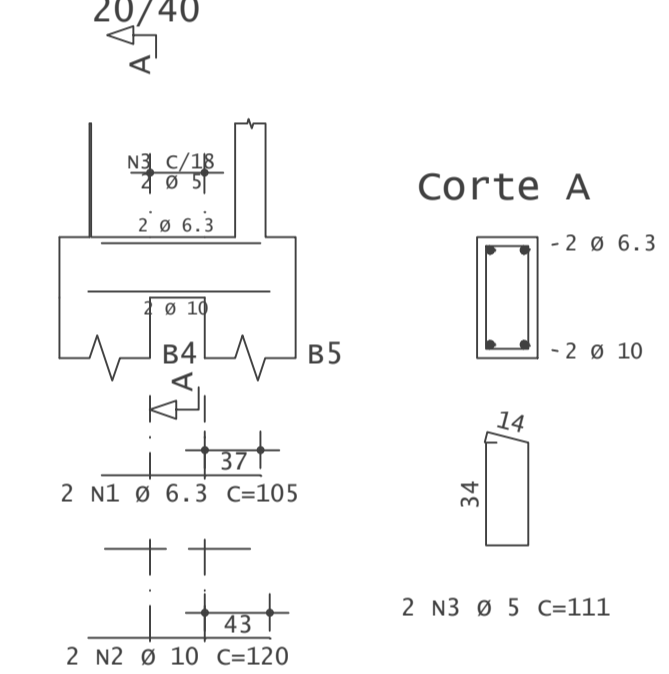
V1



B7=B8
(ESCALA 1:25)



V3

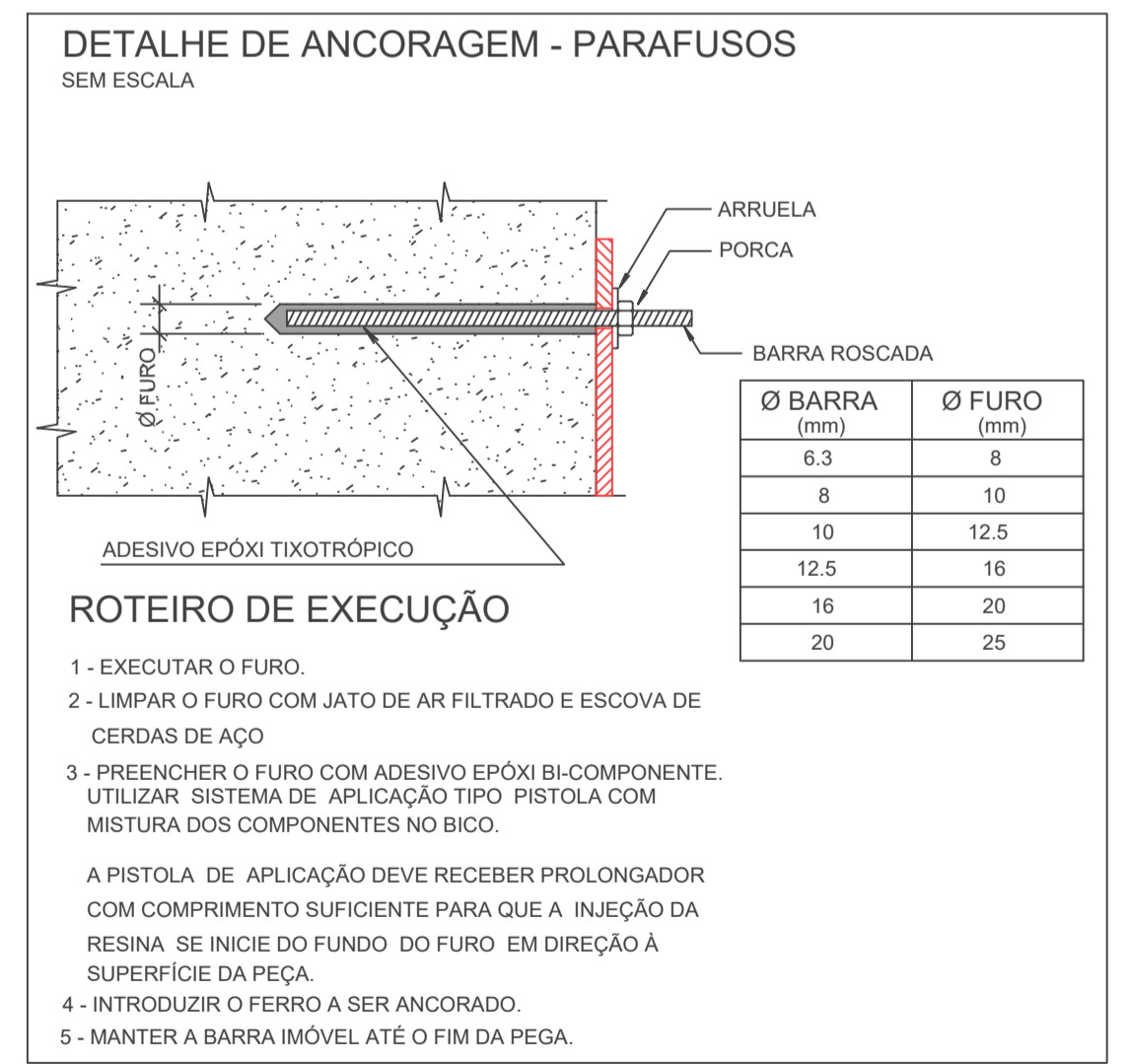
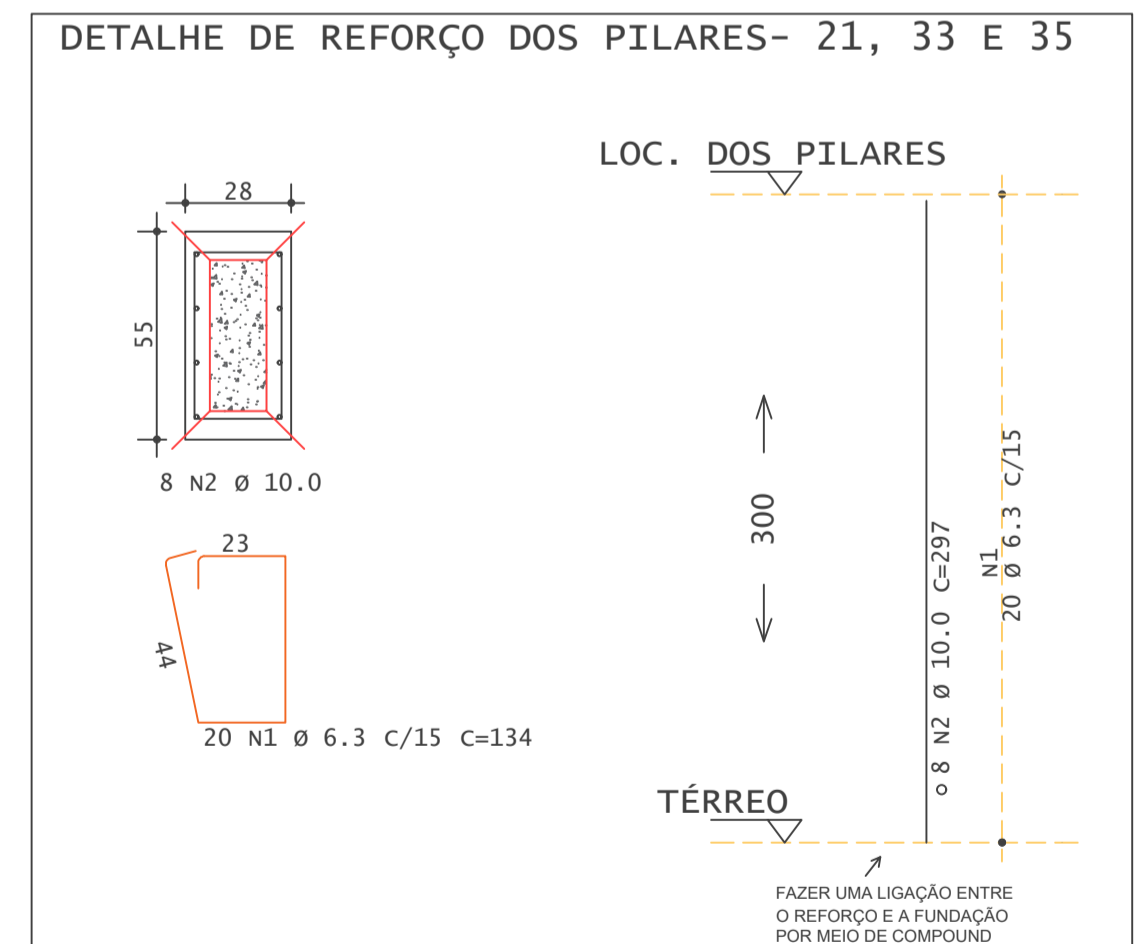


AÇO	POS	BIT (mm)	QUANT	COMPRIMENTO	
				UNIT (cm)	TOTAL (cm)
B1=B2=B3=B4=B5=B6 (X6)					
50A	1	6.3	24	408	9792
50A	2	6.3	18	158	2844
50A	3	10	18	195	3510
50A	4	8	48	230	11040
V1					
60A	1	5	2	445	890
50A	2	6.3	4	110	440
50A	3	10	2	635	1270
60A	4	5	31	111	3441
V2					
50A	1	6.3	2	165	330
60A	2	5	2	215	430
50A	3	10	2	450	900
50A	4	6.3	2	110	220
50A	5	10	2	340	680
50A	6	10	2	405	810
60A	7	5	36	111	3996
V3					
50A	1	6.3	2	105	210
50A	2	10	2	120	240
60A	3	5	2	111	222
B7=B8 (X2)					
50A	1	8	6	234	1404
50A	2	10	8	229	1832
50A	3	10	8	233	1864

RESUMO AÇO CA 50-60			
AÇO	BIT (mm)	COMPR (m)	PESO (kg)
60A	5	90	14
50A	6.3	138	34
50A	8	124	49
50A	10	111	69
Peso Total		60A =	14 kg
Peso Total		50A =	152 kg

AÇO	POS	BIT (mm)	QUANT	COMPRIMENTO UNIT (cm)	TOTAL (cm)
REFORÇO NOS PILARES P21, 33, 35 - (X3)					
50A	1	6.3	20(x3)	134	8040
50A	2	10.0	8(x3)	297	7128

RESUMO AÇO CA 50-60			
AÇO	BIT (mm)	COMPR (m)	PESO (kg)
50A	6.3	81	20
50A	10	72	45
Peso Total		50A =	65 kg



Richard Lourenço
(11) 99207-7014 Projetos Estruturais
contato@obraria.com

CLIENTE: **CLUBE PAINEIRAS**

OBRA: **QUADRAS DE TÊNIS INFANTIL**

ENDEREÇO: **AV. DOUTOR ALBERTO PENTEADO, 605 - SÃO PAULO**

TÍTULO: **DETALHAMENTO DAS VIGAS E BLOCOS DE FUNDAÇÃO
DETALHAMENTO DOS PILARES DE REFORÇO (X3)**

DATA: 16/09/2022 | ESCALA: 1:50 / INDICADA | FCK: 25 MPa | DESENHO: Paola V Boas | VERIF: Richard Lourenço | ENG: Richard Lourenço

OBRA N.º: 276

DES N.º: 02

REV N.º: 01